



Lindab Coverline™

## Lindab Roof Safety System Technical Information

# Dimensioning

## Walkway



### Choice of consoles

Design of fastening device	Roofing	Battens for light-weight underlying roofs	Batten for tongued and grooved board	Parallel to ridge	Normal to ridge
Tongue and grooved boarding/Plywood plastic film or board on wooden roof trusses	Concrete tile double lap	Steel batten (BL)	12+25	BRKUBa)	
		45 mm wood batten	25+25	BRKR	
			Steel batten (KL)	BUPLBa)	
	Clay tile, double lap	Steel batten (BL)	12+25	BRKU2	
		45 mm wood batten	25+25	BRUH2	
	Clay tile, single lap	Steel batten (BL)	12+25	BRKU1	
		45 mm wood batten	25+25	BRUH1	
	Felt/PVC sheet			UNIK+UNIK NBR	STK
	Standing seam roofing			UNIK+UNIK NBR	STKFF
Floordeck, concrete, aircrete	Felt/PVC sheet			UNIK+UNIK NBR	STK
	Standing seam roofing			UNIK+UNIK NBR	STKFF
Coverline, Topline etc., Fibre reinforced concrete				UNIK+UNIK NBR	STK

a) minimum batten c/l distance 340 mm

# Dimensioning

## Ridge, eaves guard, snow fence

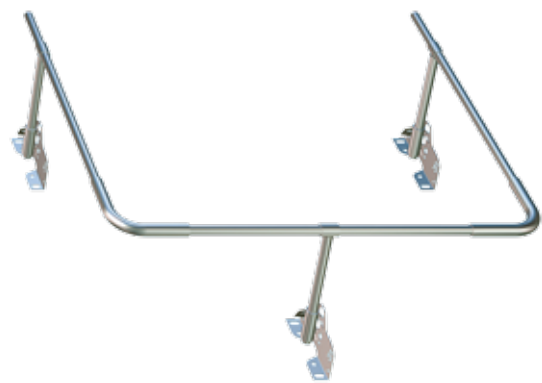


### Quick selection of consoles for various roof designs

Design of anchorage	Roofing	Batten for light-weight roofs	Batten for tongued and grooved board	1 and 3 tube guard	Snow
Tongue and grooved boarding/Plywood plastic film or board on wooden roof trusses	Concrete tile double lap	Steel batten(BL)	12+25	HNT3B	HSNÖB
		45 mm wood batten	25+25	HH3B	HSNÖH
			Steel batten (KL)	HPL3B	HSNÖB
	Clay tile double lap	Steelbatten (BL)	12+25	HNT32	HSNÖB
		45 mm wood batten	25+25	HH32	HSNÖH
			Steel batten (KL)		HSNÖB
	Clay tile single lap	Steelbatten (BL)	12+25	HNT31	HSNÖB
		45 mm wood batten	25+25	HH31	HSNÖH
			Steel batten (KL)		HSNÖB
	Felt/PVC sheet			UNIK	HSN alt UNIK SNÖ
Floordeck, concrete, aircrete	Standing seam roofing			UNIK	HSN alt UNIK SNÖ
	Felt/PVC sheet			UNIK	HSN alt UNIK SNÖ
	Coverline, Topline,etc Fibre concrete			UNIK	HSN alt UNIK SNÖ

# Dimensioning

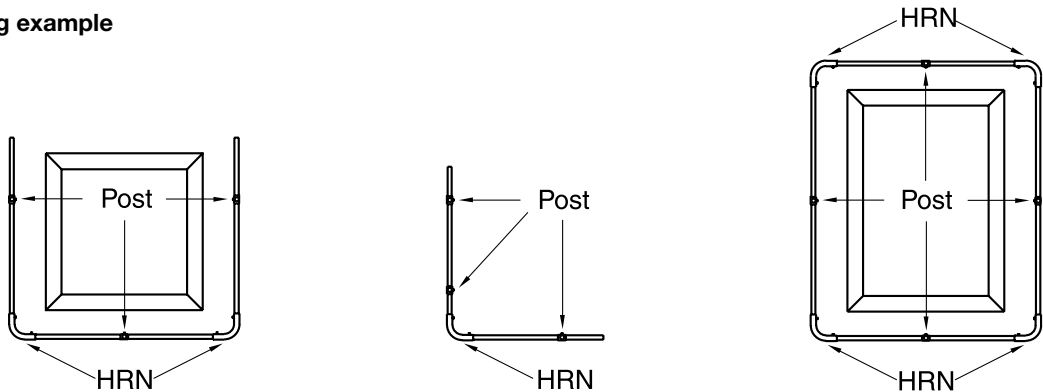
## Hand rails



Quick selection of consoles for different roof designs

Design for anchor-age	Layer	Batten		Choice of consoles/holder
Tongue and grooved boarding/Plywood plastic film or board on wooden roof trusses	Concrete tile double lap	Steel batten (BL)	12+25	HNT3B
		45 mm wood batten	25+25	HH3B
			Steel batten (KL)	HPL3B
	Clay tile double lap	Steel batten (BL)	12+25	HNT32
		45 mm wood batten	25+25	HH32
	Clay tile single lap	Steel batten (BL)	12+25	HHT31
		45 mm wood batten	25+25	HH31
	Felt/PVC sheet, Standing seam roofing			UNIK
Floordeck, concrete, aircrete	Felt/PVC sheet, Standing seam roofing			UNIK
	Coverline and Topline, etc Fibre concrete			UNIK

Mounting example



# Dimensioning

## Roof and vertical ladders



The back protection projects 900 mm.  
The back guard should terminate  
2.5 m above ground level.



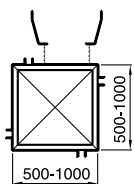
Highest rung on vertical  
ladder should be mounted  
300 mm above front edge  
of gutter, or equivalent.

We recommend that the ladder  
should terminate 2 m above  
ground level out of reach for  
children.

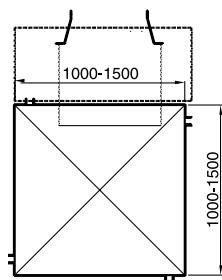
# Dimensioning

## Chimney platforms

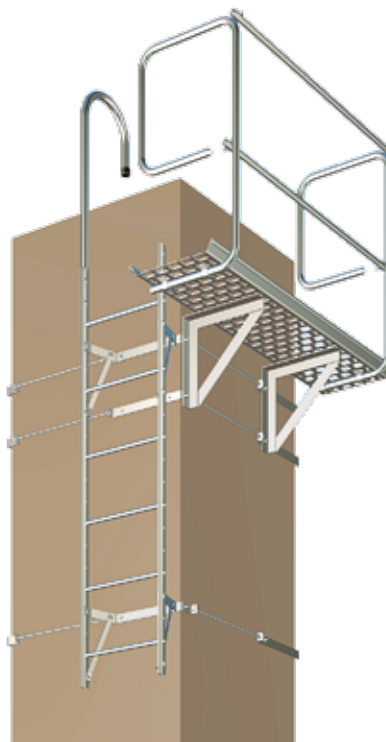
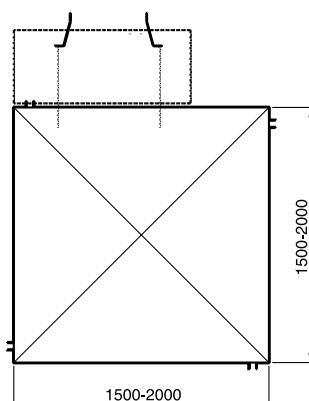
### SKBA 460



### SKBA 960



### SKBA 1460



### Example

Chimney 900x900 mm  
choose  
4xSKBA 460 and 4xHGS 650

# Dimensioning

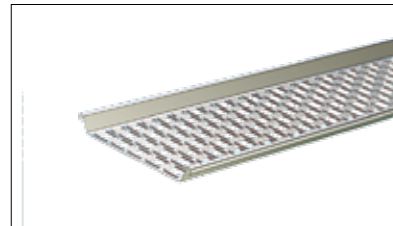
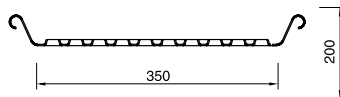
## Fastening devices

Underlying structure	Roofing	Note	Anchorage	
Tongue and groove boards/Plywood	Clay and concrete tiles	Tongue and groove boards $\geq 17$ mm or Plywood $\geq 15$ mm	PLF MOTH	
		Tongue and groove boards 22 mm	VIPP PLF MOTH	
	Felt/PVC sheet	Uninsulated roof or internal insulated roof	FÄRN2	
	Standing seam roofing		FF	
Plastic film or board on wooden roof trusses	Clay and concrete tiles	Wooden battens 45x70	IFTL	
High profile	Felt/PVC sheet	Guards ⊥ profile direction Guards    profile direction	IFLO IFVÅ	
	Standing seam roofing		FF	
Concrete	Felt/PVC sheet	External insulation	IFBET IFLÄB	
Aircrete		Uninsulated or internal insulated	FÄRN2	
	Coverline, Topline		IF IFR	
	Fibre reinforced concrete Cembonit, P6		CELUF	

# Technical Facts

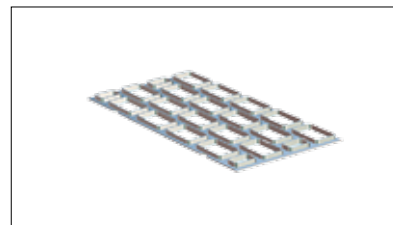
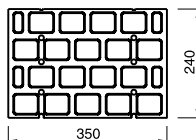
## NBR Walkway

Swaged square holes give good grip at the same time as snow and ice are pressed aside by walking on the walkway. The rounded edges protect ropes laid round the walkway. Stocked in lengths of 1080, 2040 and 3000 mm. Max distance between consoles and handrail posts: 1200 mm.



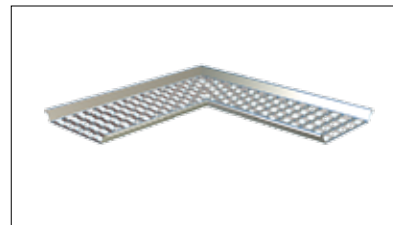
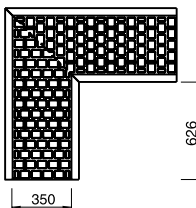
## NBRS Joining kit for walkway

Walkways are laid end to end to get the pattern to match with the joining piece. Bolt kit 10 is included.



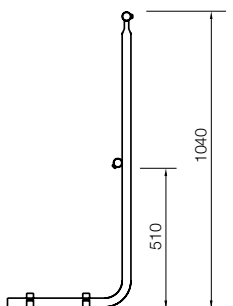
## NBRV Joint kit

Used to join two Walkways at right-angle corners. Note that the consoles should be placed as close as possible to the corners to provide stability.



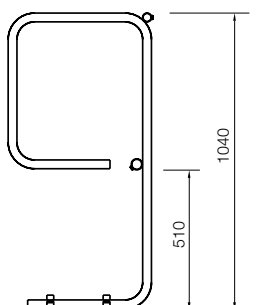
## NSTO Post for handrail

The post is used together with RÖR ø 27 mm as a handrail. Bolt kit 8 included.



## NÄND End post for handrail

The post is used together with RÖR ø 27 mm as a handrail. Bolt kit 8 included.

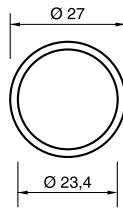




# Technical Facts

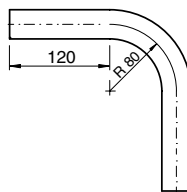
## RÖR Pipe

The pipe is available in two dimensions, with OD of 27 mm. The heavy pipe is only used together with forged roof fittings for single pipe ridge and eaves guards. Max distance between consoles 1200 mm. Stocked in lengths of 3 and 6 m.



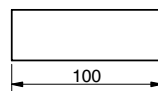
## HRN Corner joint

To join two RÖR at a right angle corner. Available for pipes with outer diameter 27 mm.



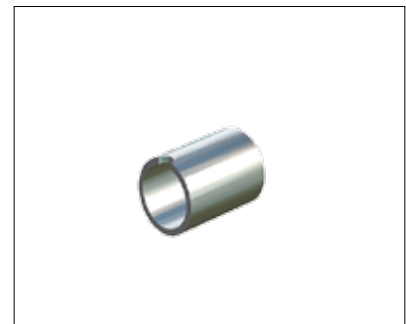
## SKH Joining sleeve

Sleeve for joining RÖR.



## ÄND End sleeve

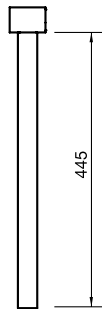
End sleeve for terminating RÖR.



# Technical Facts

## SRT T post

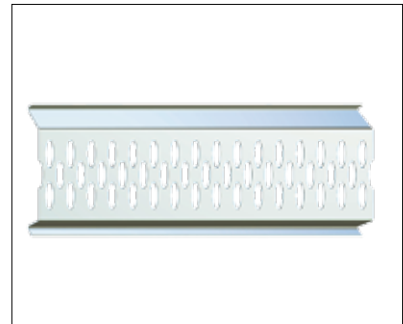
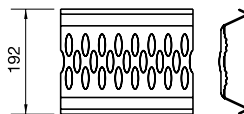
Post fitted together with SKH and console.



## SNÖ Snow Fence

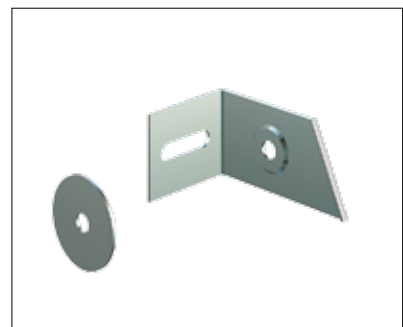
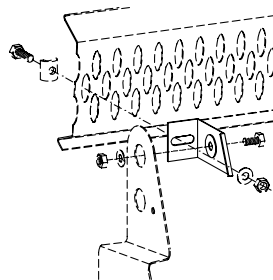
The slotted snow fence effectively stops snow from sliding off roofs. Stocked in lengths of 2070 and 3060 mm. Snow Fence is joined with a minimum 90 mm overlap.

The distance between snow fence is determined by roof pitch, snow zone and roof length. Bolt kit 4 is included.



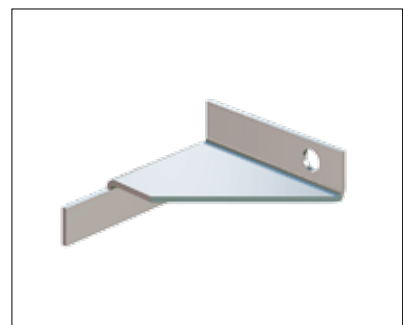
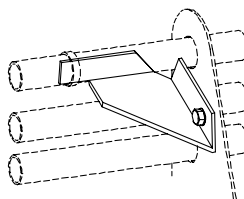
## FV Attachment bracket

Used to fix snow fall guard SNÖ to existing consoles for ridge and eaves handrails. An assembly kit as in the illustration is included.



## SVI Support console

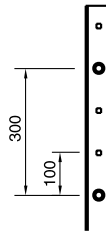
The support console must be used on all guards with RÖR and OD 27 mm to take up loads parallel to the guard. The support console is screwed to a console and fixed to the upper pipe with a hose clamp and screw, which are supplied together with the support console. Only one support console is needed per fence. The support console also stops the pipe from rotating.



# Technical Facts

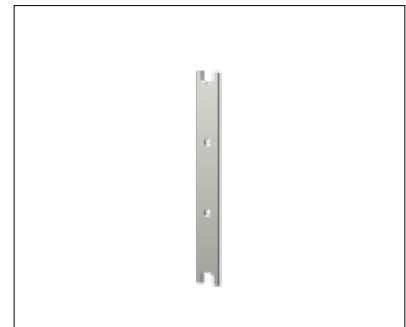
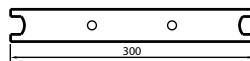
## STED Ladder

The ladders have a total width of 450 mm and are stocked in lengths of 1500, 1800, 2400, 3000 and 3600 mm.



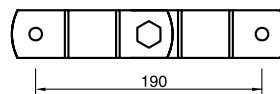
## SKAN Joining kit

Joining kits for ladders, supplied in pairs.



## TSS Joining kit

Joining kit for bend in ladders. Supplied in pairs. Used to join ladders on mansard roofs or to join roof and wall ladders.

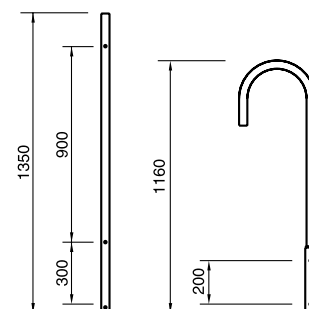


## HALH Hand rail

Hand rail, holder for ladders without safety baskets. Supplied in pairs. Bolt kit 7 is included.

## HALR Hand rail

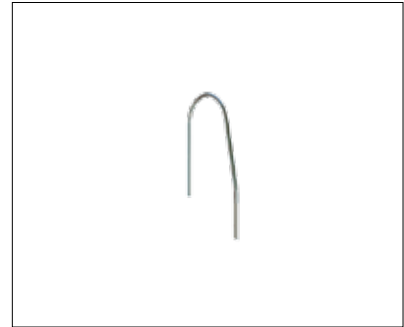
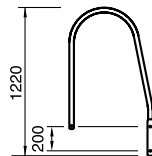
Rounded hand rail. Hand rails for ladders without safety baskets. Supplied in pairs. Bolt kit 6 is included.



## Technical Facts

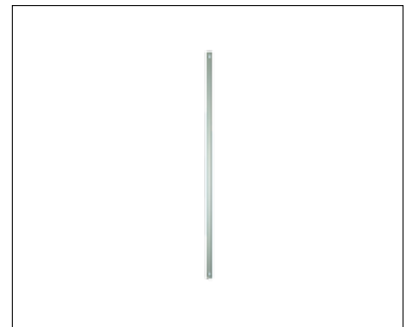
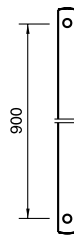
### HALF Coupling for roof ladder

Hand rail for connection to roof ladders without safety baskets. Supplied in pairs. Bolt kit 6 is included.



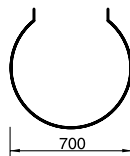
### STSK Stay for back protection

The back protection projects 900 mm. One kit includes 4 stays. The safety basket can also be used for emergency exits.



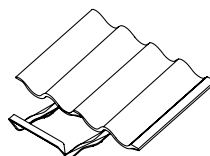
### BYSK Clamp for safety basket

Clamp for back protection. Used together with STSK to form a complete safety basket kit. Bolt kit 5 is included.



### GLS Slide guard for ladders

The slide guard is installed on the roof to prevent ladders from sliding..

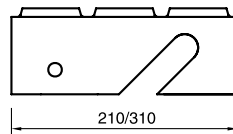


# Technical Facts

## STÅS Platform

The step is used to make transfer between wall and roof ladders safer. Can also be used as a rest or work area beside chimneys if the total fall height does not exceed 8 m.

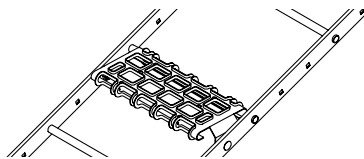
The step is available in sizes 210x400 and 310x400 mm. STÅS is hooked onto a rung and fixed to the ladder with screws.



## STEP Ladder steps

Loose steps for roof ladders on roof pitches between 10° and 30°. The step is fixed to existing roof ladders. STEP is hooked onto a rung and screwed to the ladder once adjusted to suit roof pitch.

Bolt kit 17 included.



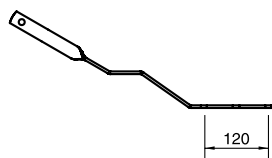
## NFSTE Ridge anchorage

Ridge anchorage for tile roofs complete with backing piece. Supplied in pairs for tongue & groove or plywood roofs. Must always have an additional spacer STK at top and bottom of ladder. We also recommend FÄTA at the bottom of the ladder.



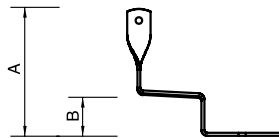
## FÄTA Anchorage

Anchorage for tile roofs. FÄTA is fixed to tongue & groove or plywood roofs and is supplied in pairs. Always install spacer STK together with FÄTA at top and bottom of ladder. Max distance between anchorages is 2.5 m. Bolt kit 3 is included.



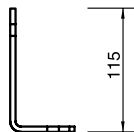
### KOTAL, KOTAH Console

Console for fixing ladders to single or double cup concrete or clay tiles in t&g or plywood substrates. Consoles are supplied in pairs. KOTAL can be used on battens 12+25 mm. KOTAH suits 25+25 mm battens and steel battens BL. Max distance between consoles is 2.0 m. Bolt kit 3 is included.



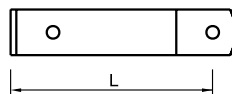
### KOTIF Console

Console for installation on ladders on smooth roofs with waterproof layer of felt, PVC sheet or flat sheet roofing. KOTIF is supplied in pairs, with assembly kit, sealed with lead 45x70 or EPDM 160x35. Can be used in combination with IF plates. Max distance between consoles is 2.0 m.



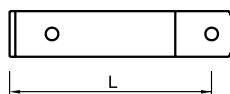
### KOFS Wall console

Consoles for installation of wall ladders  
Available in lengths of 150, 250, 350, 450, 550 and 650 mm.  
Supplied in pairs. Wall ladders should normally be fixed with through fasteners. If not possible, wall ladders should be fixed to the roof ladder with TSS. Max distance between brackets is 5 m.  
Bolt kit 14 is included.



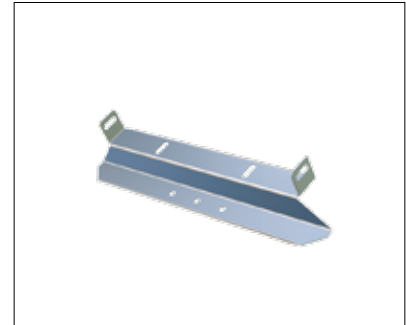
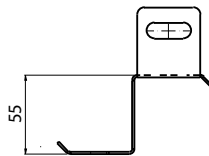
### STAFS Stay

The stay is used as a spacer between KOFS consoles for wall ladder installation. STAFS is available in the same lengths as KOFS and is supplied in pairs. Max c/l distance 2.5 m.  
Bolt kit 3 included.

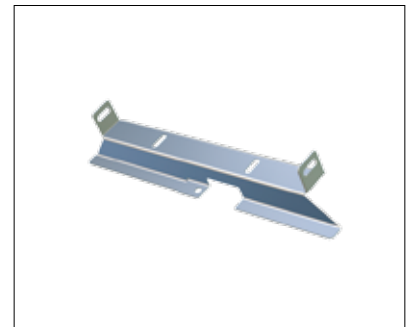
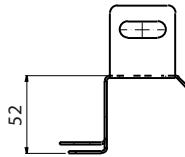


**STK Console**

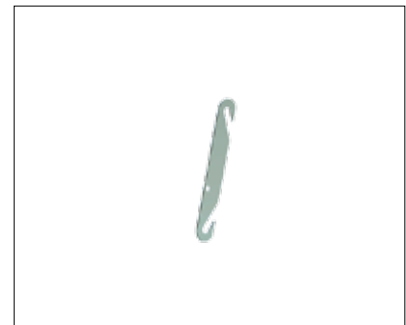
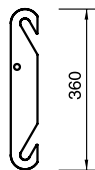
This unique console is used for a number of different applications. As a middle console when ladder is fixed with NFSTE or FÄTA (max distance between these are 2,5 m). As a middle console when ladders are mounted on IF plates on profiled sheeting or tile effect roofing. For attachment of walkway when mounted at a right angle towards the ridge. Bolt kit 8 is included.

**STKFF Console**

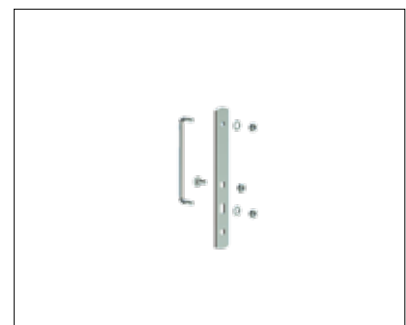
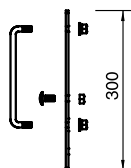
This console is used to fix ladders and walkways onto the FF. It is also used when mounting on fibre reinforced concrete roofing. Bolt kit 18 is included.

**UBVÄS Hanging fittings**

Hanging fittings are screwed to the loose ladder. UBVÄS Supplied in pairs. Bolt kit 3 is included.

**VFSTE Ladder anch.**

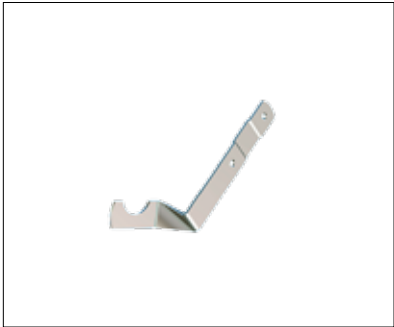
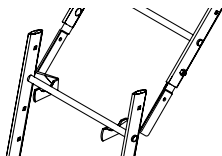
Anchorage for installing vertical ladders on profiled steel sheets, min 0.5 mm. Use side stays on ladder when KOFS and STAFS are used with VFSTE.



# Technical Facts

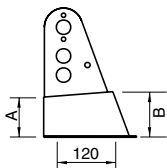
**GLSS**

Slide guard for roof ladder. The slide guard stops the ladder from sliding. Supplied in pairs.



**HNT3B, HH3B, HPL3B, HNT31, HH31, HNT32, HH32**  
**Consoles**

Consoles for concrete and clay tiles with various batten heights and substrates.

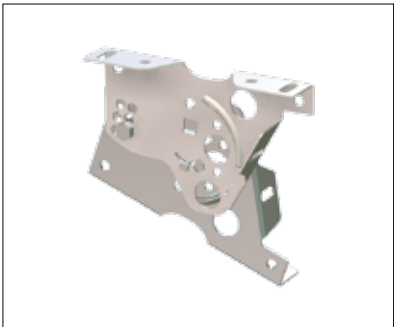
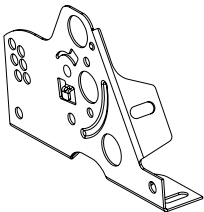


	A	B
HNT3B	81	93
HH3B	92	105
HPL3B	68	82
HNT31	102	109
HH31	115	122
HNT32	79	86
HH32	91	97



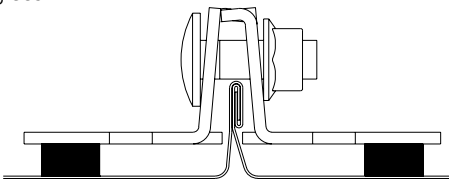
**UNIK Console**

A unique console to be used single or in a combination of two used as walkway bracket.. See tables page 2-4.



**FF Lap Joint**

To mount fastening device on standing seam roofs.

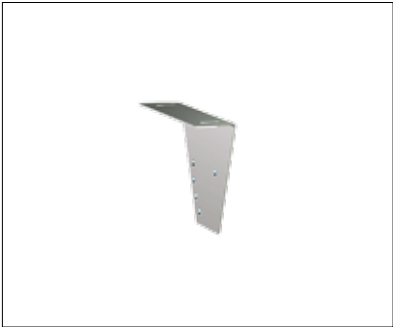
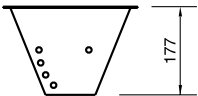




# Technical Facts

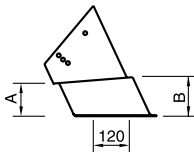
## NKÖ Upper console (parallel to ridge)

Installed together with the lower consoles to form a complete walkway bracket. Hole pattern allows walkway angle to be varied for 15°, 20°, 25°, 30°, 35°, 40° and 45° pitches. Bolt kit 10 is included.



## BRKUB, BRKR, BUPLB, BRKU1, BRUH1, BRKU2, BRUH2 Lower consoles (parallel to ridge)

All consoles are installed together with the upper walkway console NKÖ to form a complete bracket.

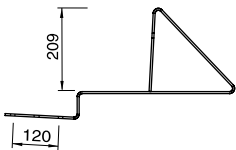


	A	B
BRKUB	76	93
BRKR	91	107
BUPLB	59	76
BRKU1	98	109
BRUH1	111	122
BRKU2	77	86
BRUH2	87	96



## HSNÖB, HSNÖH Holder for snow fence

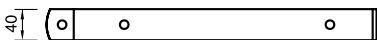
Holder for both concrete and clay tiles med with various batten heights and substrates..



# Technical Facts

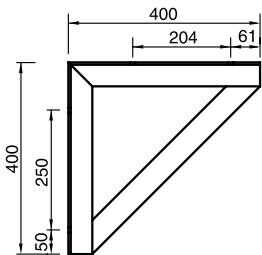
## SKBA Chimney strap

Chimney straps are combined to suit different chimneys. Straps are available in lengths of 460, 960 and 1460 mm. Pre-punched holes are provided for ladders and cat walks. Please refer to the example above for choice of strap length.



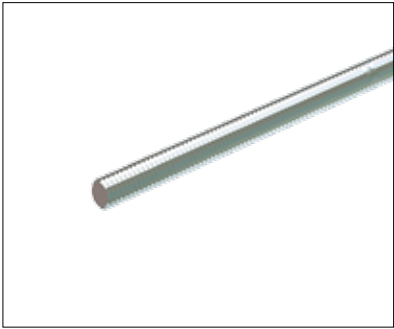
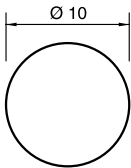
## SKKO Bracket

Bracket for installation of walkway on chimney strap or direct to the chimney. Bolt kit 10 is included.



## HGS Threaded bar

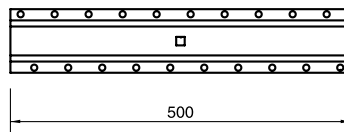
Stainless steel threaded bar. Available in lengths of 350 and 650 mm. Combined with chimney straps to suit each chimney.



# Technical Facts

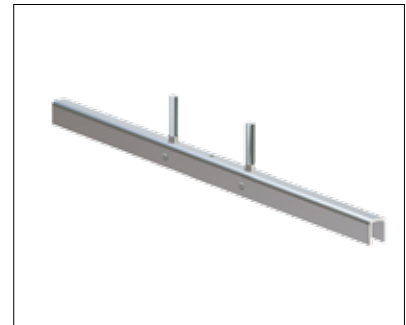
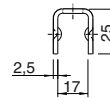
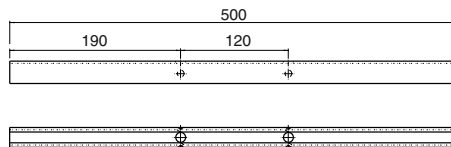
## PLF Flat anchorage

The flat anchorage is fixed to t&g boarding, min. 17 mm or plywood min 15 mm, using 8 pcs SPAX screws. It is easiest to insert the screws with a screw tightener. Recommended bit is "Ph3". Bolt kit 16 is included. Use console with height for 12+25 mm batten.



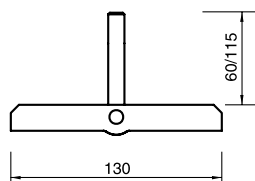
## MOTH Steel backing plate

The plate can be fixed from inside the roof. Use the small hole in the middle to prefix it onto the board. The premounted bolts stays in place while mounting the console on the outside. MOTH can be used both for wall and roof mounting.



## VIPP Tilting bolt

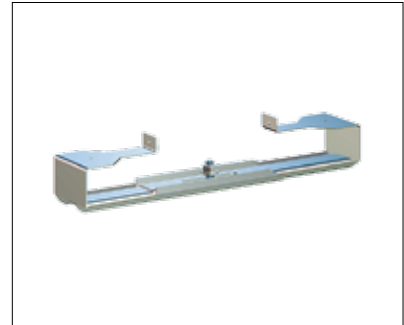
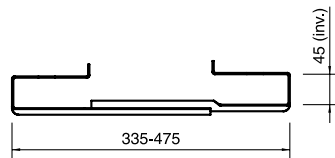
Tilting bolts can be installed from outside the roof. NOTE! Tilting bolts are always installed at right angles to boards. Screw lengths for VIPP are 60 and 115 mm. The 60 mm bolt is fitted with tool VIV. The tilting bolts are for min 22 mm t&g boards or min 18 mm plywood.



# Technical Facts

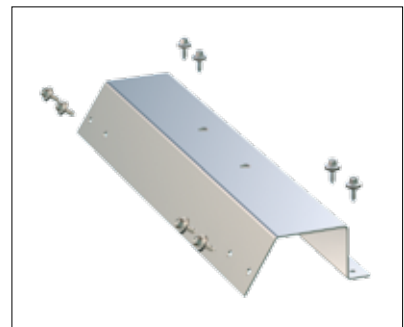
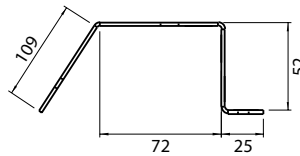
## IFTL Tiling batten fastening

Fastening device for wooden battens.  
Adjustable anchorage for 45x70 mm wooden battens, irrespective of c/l distance. Bolt kit 15 is included.



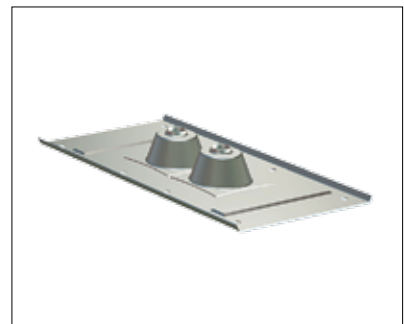
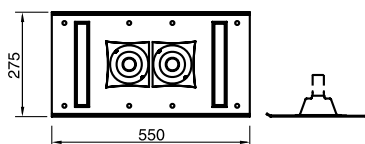
## IF20 / IF45 Fastening plates for steel sheeting

The fastening plates can be used for Coverline profiles. Also available for other makes of cladding. Minimum permitted thickness 0.5 mm for steel.  
Bolt kit 2 is included.



## IFLO Fastening device

Fastening device with pillar PEL for externally insulated roofs on floordeck substrate.  
Approved for profile height min 70 mm and material thickness min 0.65 mm. Bolt kit 2 is included. IFLO is installed with the long side parallel to the corrugations. Sealed with IMUF2 at pillars.  
Order PEL and IMUF2 separately.



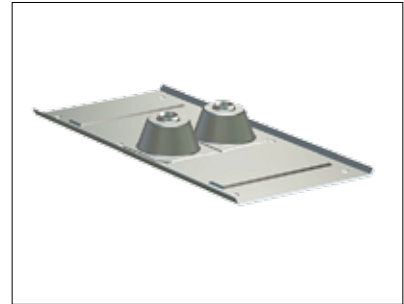
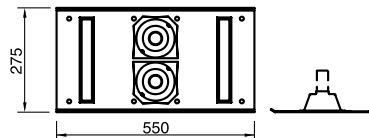
# Technical Facts

## IFVÅ Fastening device

Fastening device with pillar PEL for externally insulated roofs on floordeck substrate.

Approved for profile height min 70 mm and material thickness min 0.65 mm. Bolt kit 2 is included. IFVÅ is installed with the long side parallel to the corrugations. Sealed with IMUF2 at pillars.

Order PEL and IMUF2 separately.

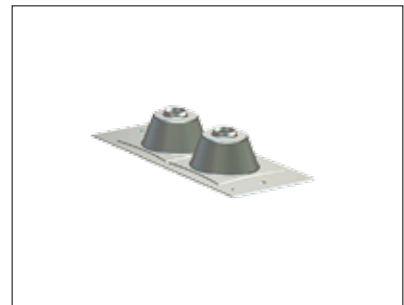
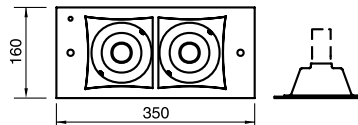


## IFBET Fastening device

Fastening device with pillar PEL for externally insulated roofs on concrete substrate.

Attachment to the concrete is done with expanding bolts or chemical anchors. Sealed with IMUF2 at pillars.

Order PEL and IMUF2 separately.

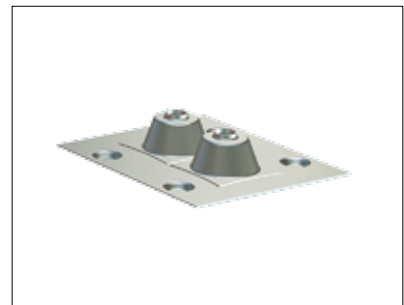
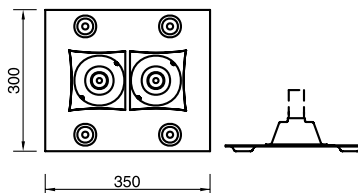


## IFLÅB Fastening device

Fastening device with pillar PEL for externally insulated roofs on light concrete substrate.

Attachment is done with through bolts and steel MOH backing plates of length 500 mm. Sealed with IMUF2 at pillars.

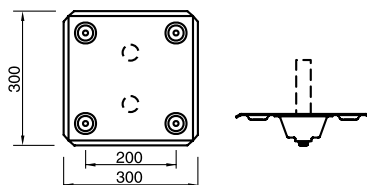
Order PEL and IMUF2 separately.



# Technical Facts

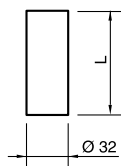
## FÄRN2 Device for tongue & groove boards and light concrete

Fastening device with pillar PEL for internally insulated roofs on t&g or light concrete substrates with felt or PVC sheet layer. Attachment to t&g boards, plywood and to light concrete, with through bolts and steel MOH backing plates or VIPP folding bolts of suitable length. Sealed with IMUF2 at pillars. Order PEL and IMUF2 separately.



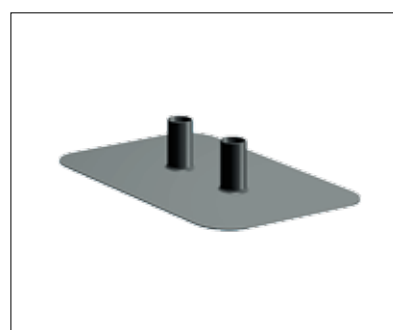
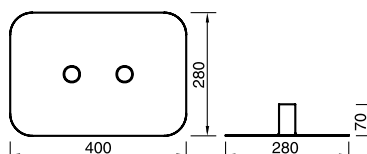
## PEL Pillar for fastening device

Used together with IFLO, IFVÅ, IFBET, IFLÄB and FÄRN2. Supplied in pairs and stocked in lengths 80, 120, 160, 200, 240, 280, 350 mm. Pillars should have a free height of 30-50 mm above the layers. This is so that IMUF2 can be used to seal around the pillars.



## IMUF2 Rubber gasket

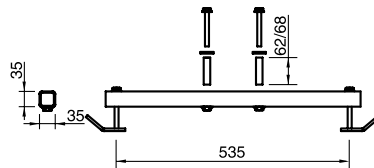
Rubber gasket for sealing around PEL pillars at roof transitions in felt or PVC sheet layers. Sealed to pillar with included hose clamp.



# Technical Facts

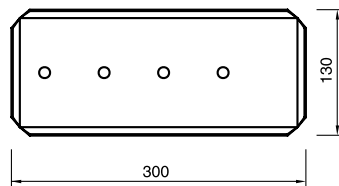
## CELUF Fastening device for fibre reinforced concrete

Fastening device to suit fibre reinforced boards such as Cembonit and Medio P6. CELUF is intended for batten spacing 535 mm.



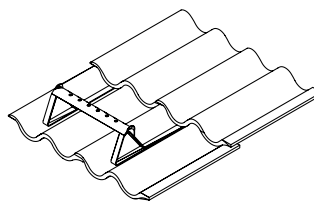
## UNDLÄ Bracket backing

The backing plate is used to prevent consoles from pressing through felt, PVC sheet or flat sheet roofing when the consoles are fitted directly to the layer.



## STEG, Batten step

Steps for installation on buildings of maximum facade height < 4 m. For concrete double lap only.

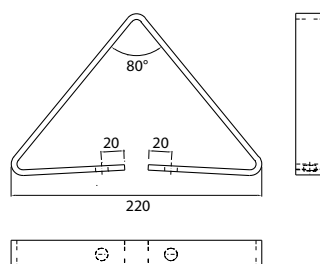


# Technical Facts

Anchorage points are only permitted for roof pitches up to 6°.  
Not suitable for roofs with clay or concrete tiles.

## LLF Anchorage point

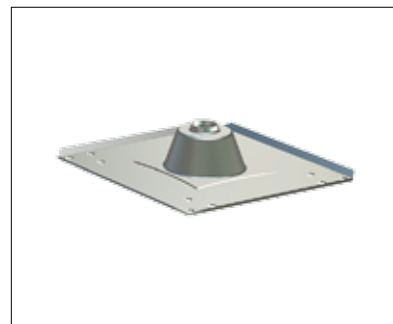
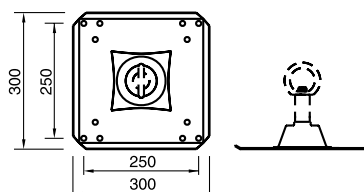
Anchorage point which fits FF, IF20, IF45, IFLO, IFVÅ, IFBET, IFLÄB and FÄRN2. Seal with EPDM 35x160 if installed on flat roofs with roofing felt or PVC film.



## IFFÖ Plate for anchorage point

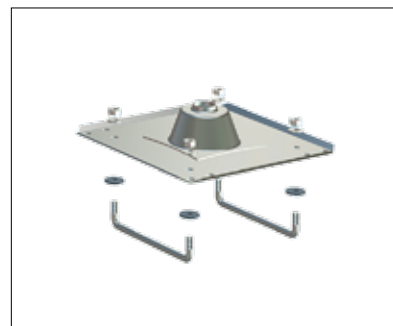
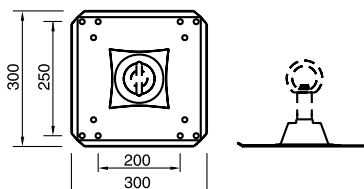
Anchorage point for externally insulated roofs on concrete or light concrete substrate. IFFÖ is fitted to concrete with expander bolts or chemical anchors. In light concrete, it is fitted with through screws and steel MOH of length 500 mm or tilting bolt VIPP of suitable screw length. PELÖ including eye must have a free height of at least 150 mm. Seal with IMUF1 at the pillar.

Order PELÖ and IMUF1 separately.



## IFFÖP Plate for anchorage point

Anchorage point for externally insulated roofs on profiled sheeting substrate. Fixed with U-bolts as installation instruction. Supplied with bolt kit 1. Pillar length and sealing as for IFFÖ. Order PELÖ and IMUF1 separately.



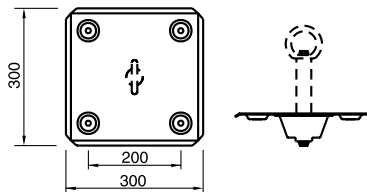


# Technical Facts

## FÄRN1 Plate for anchorage point

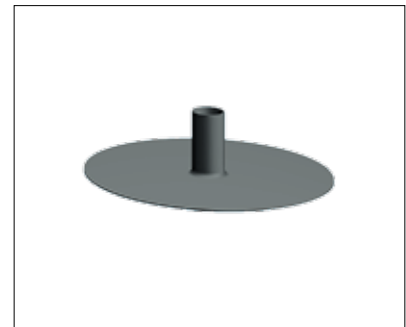
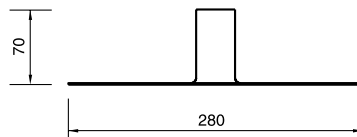
Anchorage point for externally insulated roofs on wood panel or light concrete substrate, sealed with felt or PVC sheet. Fixing to tongue-and-groove boarding or plywood as in table on 190 and for light concrete, same as for IFFÖ.

Order PELÖ and IMUF1 separately.



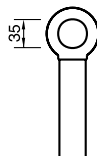
## IMUF1 Rubber gasket

Rubber gasket for sealing around PELÖ pillar at roof transitions. Chloroprene rubber seal to seal against roofing felt. PVC seal to seal against PVC film. Sealed to pillar with hose clamp.



## PELÖ Pillar

Pillar with eye stocked in following lengths: 120, 160, 200, 240, 280 and 350 mm.





Lindab Profile is a business area within the Lindab Group that develops, manufactures, and markets efficient, economical and aesthetic steel and sheet-metal solutions for the building industry.

We offer everything from complete building systems to individual building components for all types of housing, as well as commercial and industrial buildings.

Lindab Profile is represented in over 25 countries throughout Europe. Our head office is in Förslöv, in the south of Sweden.



### **Lindab Profile**

SE-269 82 Båstad  
Phone +46 (0)431 850 00  
[www.lindab.com](http://www.lindab.com)